

**AGENDA  
PLANNING COMMISSION  
CITY OF LAKEWOOD  
12650 DETROIT AVENUE  
FEBRUARY 2, 2023**

**PRE-REVIEW MEETING  
6:00 P.M.  
AUDITORIUM**

**1. REVIEW DOCKET ITEMS**

**REVIEW MEETING  
6:30 P.M.  
AUDITORIUM**

- 1. ROLL CALL**
- 2. APPROVE THE MINUTES OF THE JANUARY 5, 2023 MEETING**
- 3. OPENING REMARKS**

**NEW BUSINESS**

**CONDITIONAL USE**

- 4. Docket No. 02-02-23  
15322 Detroit Ave.  
Crumb & Spigot**

Tommy Chesnes, Onyx Creative, applicant requests the review and approval for a conditional use permit to operate outdoor sidewalk dining, pursuant to section 1129.13 – supplemental regulations for outdoor/ seasonal dining facility. Property is in a C2 – Commercial, Retail district. (Page 2)

**ADJOURN**

*“Individuals with disabilities who require accommodations for participation in meetings must request accommodations at least 3 business days ahead of the scheduled meeting. Contact Michelle Nochta at (216) 529-5906 [michelle.nochta@lakewoodoh.net](mailto:michelle.nochta@lakewoodoh.net) .”*



PLANNING COMMISSION

12650 Detroit Avenue • 44107 • (216) 529-6630 • FAX (216) 529-5907  
www.onelakewood.com

## Application Cover Page

**Docket No.: 02-02-23**

**Permit No.: PC23-000001**

**Applicant Name: Tommy Chesnes, Onyx Creative**

**Project Address: 15322 Detroit Ave.**

**Project Name: Crumb & Spigot**

**Proposal: Approval for a conditional use permit to operate outdoor sidewalk dining, pursuant to section 1129.13 – supplemental regulations for outdoor/seasonal dining facility. Property is in a C2 – Commercial, Retail district.**



Google Earth



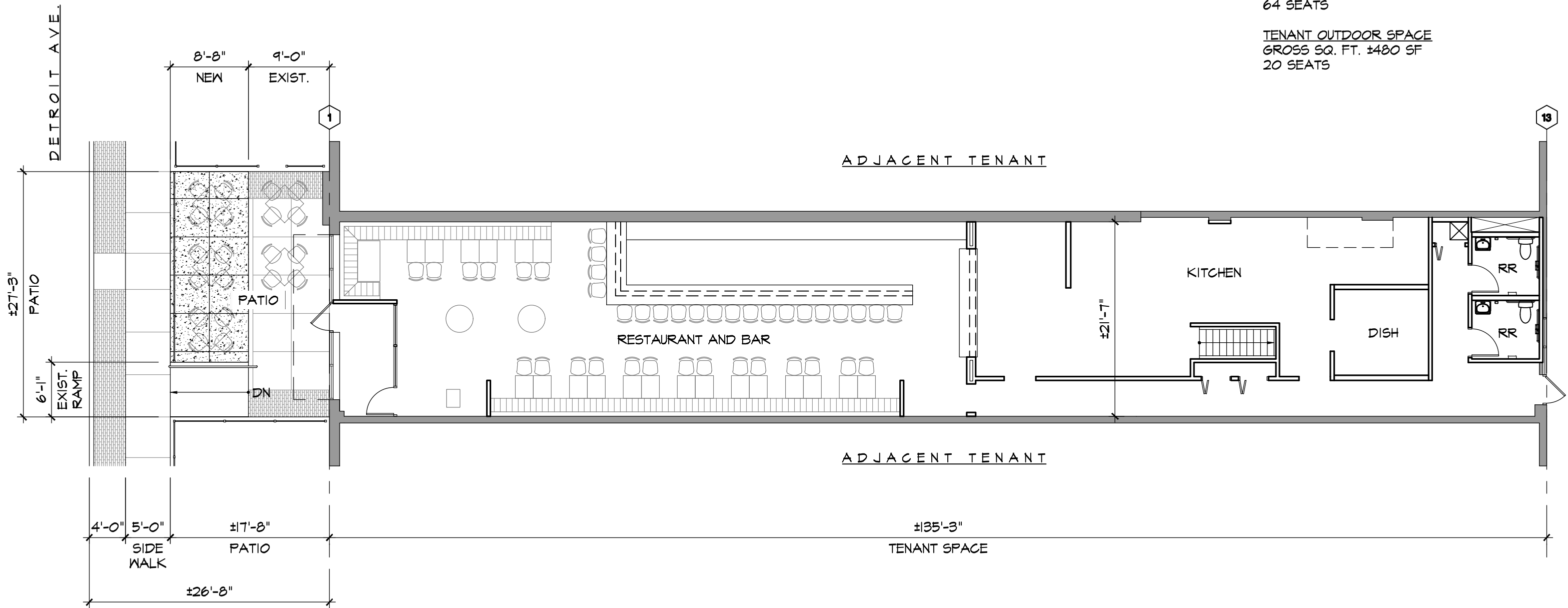
SOUTH ELEVATION  
FRONT



NORTH ELEVATION  
REAR



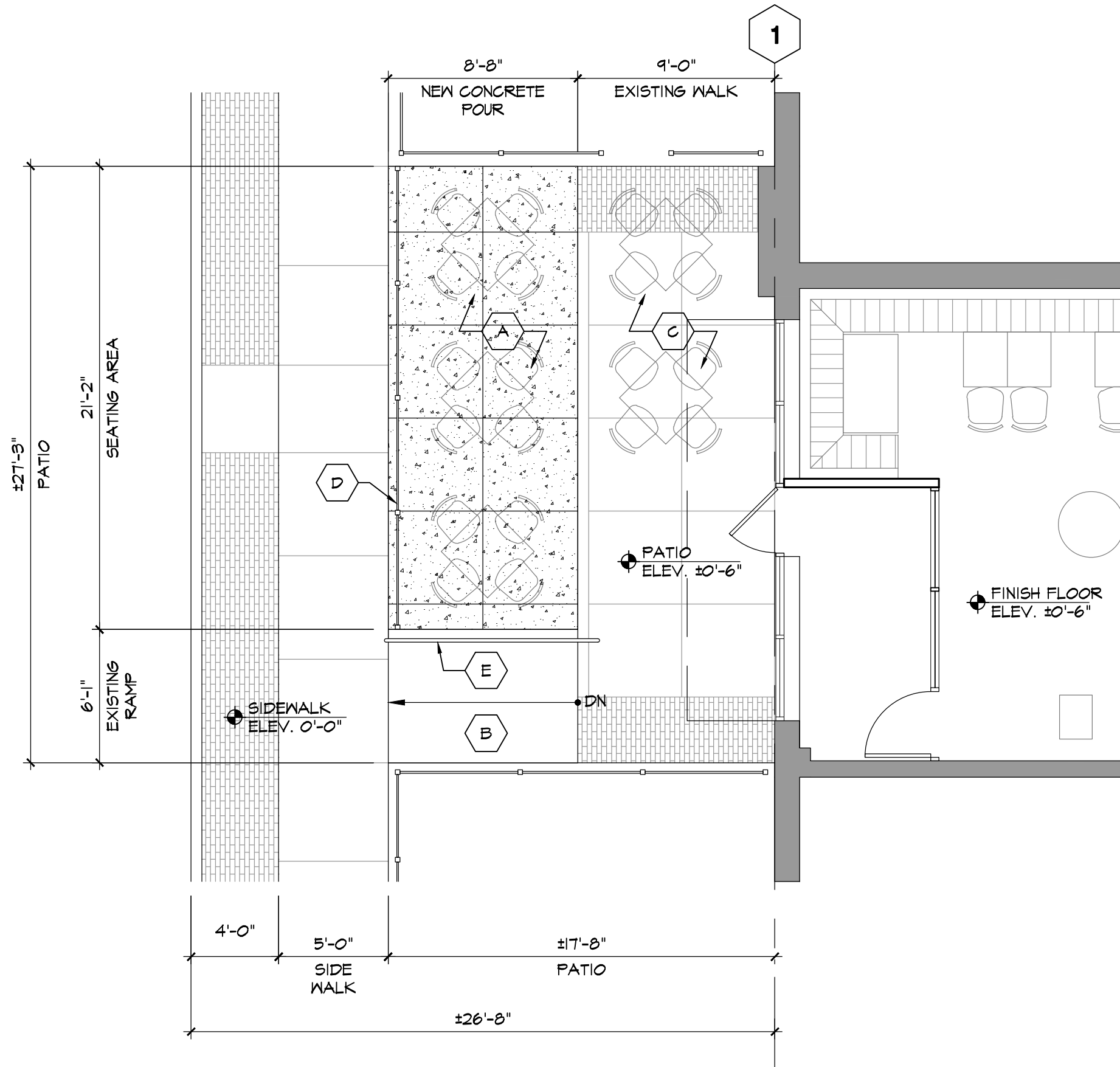
SOUTH ELEVATION  
FRONT



TENANT INTERIOR SPACE  
 GROSS SQ. FT. ±3,000 SF  
 64 SEATS

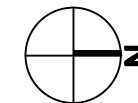
TENANT OUTDOOR SPACE  
 GROSS SQ. FT. ±480 SF  
 20 SEATS

 **FLOOR PLAN**  
 3/32" = 1'-0"



**KEYNOTES**

- A** NEW CONCRETE PATIO POUR OVER EXISTING CONCRETE. SLOPE AWAY FROM BUILDING, MAX SLOPE 2%. MAKE FLUSH WITH EXISTING UPPER PATIO. ALIGN JOINTS WITH EXISTING SIDEWALK JOINTS ALONG STOREFRONT.
- B** EXISTING ADA RAMP TO REMAIN
- C** EXISTING CONCRETE WALK TO REMAIN
- D** NEW ALUMINUM POWDER COATED FENCE. 36" TALL FENCE, BLACK, STYLE TO MATCH ADJACENT TENANT TO EAST, "TAPSTER"
- E** EXISTING ADA RAMP RAILING TO REMAIN



**PATIO PLAN**  
3/16"=1'-0"



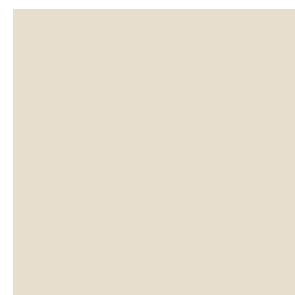




**SOUTH ELEVATION**  
SCALE: 1/8"=1'-0"



**NORTH ELEVATION**  
SCALE: 1/8"=1'-0"



EIFS-1  
Sherwin Williams  
SW 9180 Aged White



EIFS-2  
Sherwin Williams  
SW 7729 Edamame



AWN-1  
Awning Fabric on  
existing frame  
Sunbrella  
Charcoal



PD-1  
Mtl Fence Powder Coat  
Black  
36" tall fence to match  
adjacent "Tapster"

**NOTE:**  
Medallion and text signage by  
sign vendor under separate  
application. Shown for elevation  
design intent only.

## STUDIE

CHAIR

DESIGN BY TRISTAN LOHNER

ITEM 6911

**COLOR: ANTHRACITE**

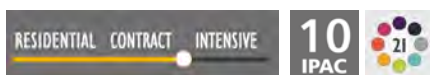


### WARRANTY

	IN ALUMINUM	IN STEEL
STRUCTURAL	3 YEARS	2 YEARS
FINISH	2 YEARS	1 YEAR

**TESTING STANDARDS** - Upon request  
 NF EN 581-1 (all products), NF EN 581-2 (seats)

### TECHNICAL FEATURE - STRUCTURE



Tubular aluminum frame  
 Curved aluminum sheet seat  
 Curved aluminum sheet backrest  
 Silence pads  
 Stacking capacity : x 8 (Height—stacked : 47 in.)  
 Available colors: see limited color chart.



### FURTHER INFORMATION

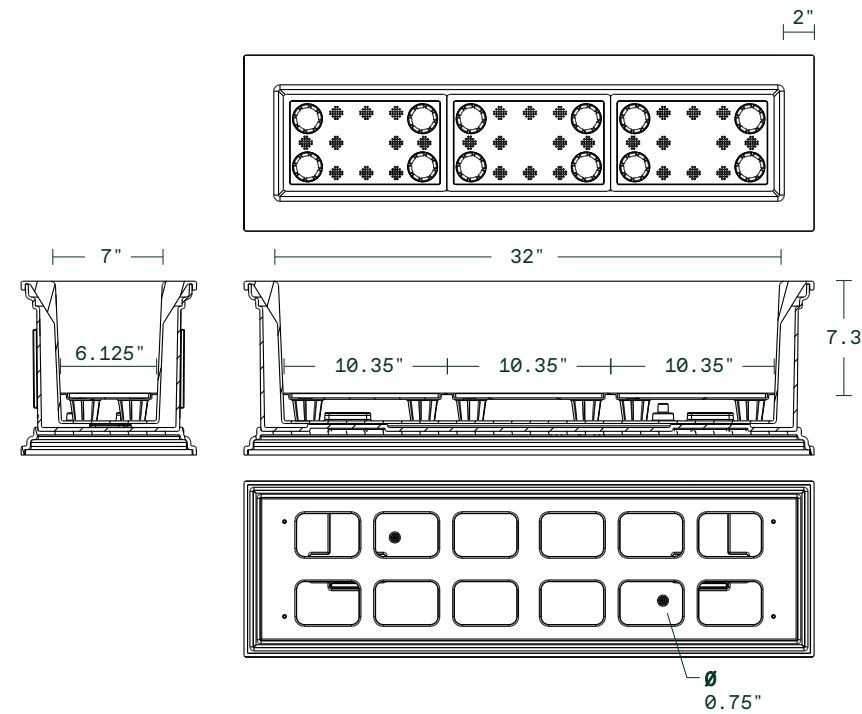
Bespoke project : Ground attachment, Cable attachment, Ballasting, Special RAL, Silkscreen printing  
 Spare parts : Pads

brixton series

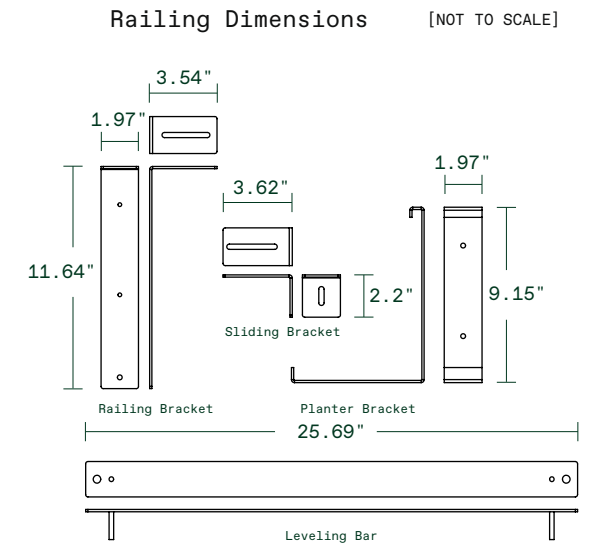
# window box planter with bracket

## window box thirty-six with brackets

36"L x 11"W x 11"H  
Weight: 26 lbs  
Capacity: 7.6 gal | 34.6 L  
Capacity with Shelf: 6.5 gal | 29.0 L



Interior Dimensions



Railing Dimensions [NOT TO SCALE]

black



white



gray

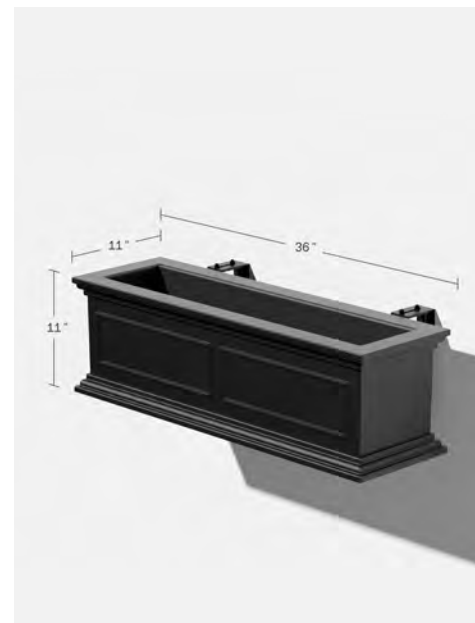
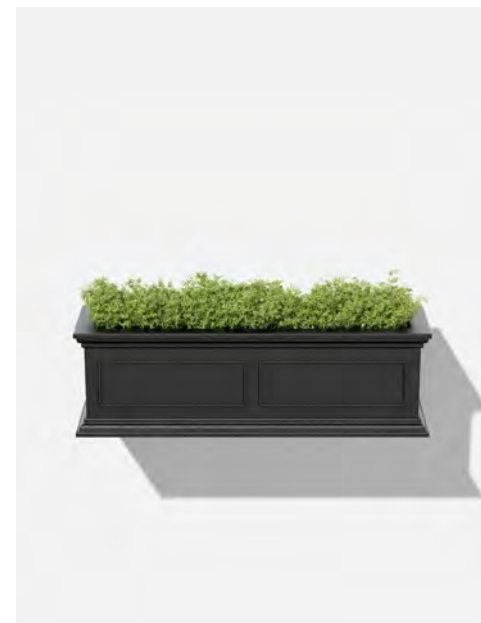


### materials

durable polypropylene construction  
thick gauge galvanized steel brackets  
made in canada

### features

all weather resistant	drainage holes
crack proof	5 year limited warranty
fade resistant	
scratch resistant	



Exterior Dimensions



Phillips Rounded Head Thread-Forming Screw  
Number 10 Size, 1/2" Long

Round Head Square Neck Screw (slider bolt)  
M6x1mm Thread, 12mm Long

Phillips Pan Head Screw  
M6x1mm Thread, 8mm Long

Cap Nut  
M6x1mm Thread

Hex Nut  
M6x1mm Thread

Hardware Included

# COSTA

TABLE 31.5 X 31.5 IN.

ITEM 8143

**COLOR: ANTHRACITE**





TESTING STANDARDS - Upon request

## WARRANTY

	IN ALUMINUM	IN STEEL
STRUCTURAL	3 YEARS	2 YEARS
FINISH	2 YEARS	1 YEAR

## TECHNICAL FEATURE - STRUCTURE

RESIDENTIAL CONTRACT INTENSIVE **9** IPAC  



Aluminum frame  
Aluminum table top



32 lb

# PATIOCONTRACT®

## Treasure Garden Commercial Aluminum 9' Octagon Push Up Lift Vented Umbrella



### PRODUCT INFO

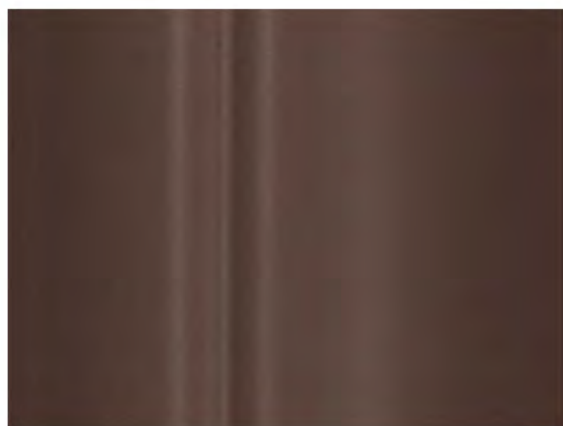
#### PRODUCT SPECIFICATIONS

Item Code	EXUCP409
SKU	UCP409
Material	Aluminum Material
Brand	Treasure Garden
Collection	Commercial
Shade Size	9 Foot
Shape Type	Octagon
Pole Material	Aluminum Pole
Lift System	Push Up Lift
Tilt System	No Tilt
Construction Quality	Commercial
Dimension	9'
Weight	18
Ribs	8
Height Opened	93.5
Pole Diameter	1.53 Smooth
Pole Wall	0.06 Thick
Vent Style	Single or Double Wind Vent
Cube	2.68

#### PRODUCT FEATURES

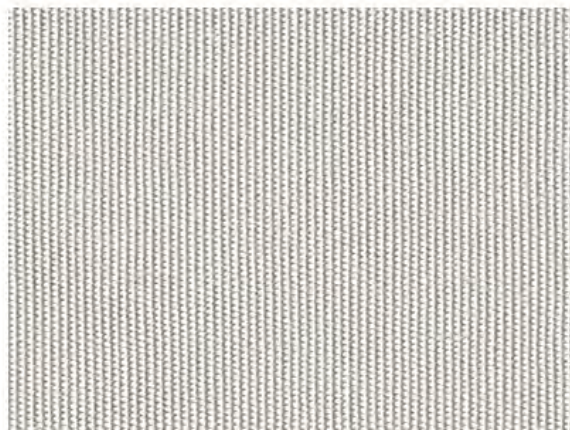
- Medium 9 foot shade size
- Classic octagon shaped canopy
- Very durable and light weight aluminum pole
- Featuring push up lift system
- 57 square foot coverage
- Recommended minimum of 70 lb. base for this style
- **LEAD TIMES ARE SUBJECT TO FABRIC AVAILABILITY**

### Finish



Bronze

### Fabric



Sunbrella Canvas

*Grade A*